

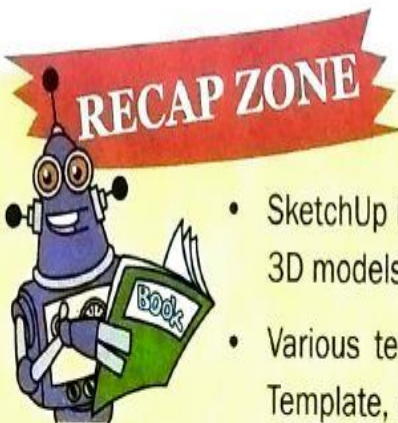
Chapter: - 9 SketchUp

➤ Important terms:-

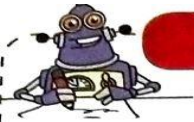
Words to Know



- **Template:** A template has a predefined setting of model's background and measurement units.
- **Line Tool:** A tool used to draw edges.
- **Rectangle Tool:** A tool used for drawing rectangular entities.
- **Move Tool:** A tool used to copy or move different objects or entities.
- **Push/Pull Tool:** A tool used to pull or push on any flat surface or extrude a 3D shape.
- **Tape Measure Tool:** A tool used to measure distance between two points.
- **Offset Tool:** A tool used to create copies of lines and objects at an identical distance from the originals.
- **Orbit Tool:** A tool used to view the model from all sides.
- **Pan Tool:** A tool used for moving the camera vertically or horizontally.
- **Zoom Tool:** A tool used to change the magnification level.



- SketchUp is a computer program that lets you create simple as well as complex 3D models of objects and buildings in a fast and easy way.
- Various templates are available in SketchUp to create a model. The Simple Template, meters is the default template.
- Tools such as Line tool, Rectangle Tool, Push/Pull Tool let you create simple 3D models easily.
- SketchUp lets you enhance the appearance of models by providing various Materials.
- Navigation Tools such as Orbit Tool, Pan Tool and Zoom Tool let you view the model in a better manner.

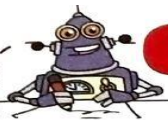
**Practice Zone**

Fill in the blanks.

1. _____ is a computer program that lets you create simple as well as complex 3D models of objects and buildings in a fast and easy way.
2. _____ is the area where models are created.
3. Status bar has two important parts, they are _____ and _____.
4. _____ tool measures distances and guidelines.
5. A _____ has a predefined setting with the model's background and measurement units.

Answers of Practice Zone:-

1. Sketchup
2. Drawing area
3. Tips , measurement box
4. Tape measure tool
5. Template

**Practice Zone**

Fill in the blanks.

1. _____ tool will push/pull on any flat surface.
2. _____ tool is used to creating copies of lines and objects at an identical distance from the originals.
3. The shortcut key is used to select Line tool _____.
4. _____ are surfaces in an object.
5. _____ tool is used for copying an object.

Answers of Practice Zone:-

1. Push/pull
2. Offset
3. L
4. Flat area
5. Template

**ASSESSMENT
ZONE**

A. Choose the correct answer.

1. A tool that allows you to change the position of an object in SketchUp is called _____.
a) Orbit
b) Move
c) Pan
d) Zoom



2. Which tool is used to delete a line?
 - a) Paint Bucket Tool
 - b) Eraser Tool
 - c) Line Tool
 - d) Freehand Tool
3. What does the Tape Measure Tool do?
 - a) It allows you to measure and draw guidelines.
 - b) It moves components.
 - c) It wraps in masking tape.
 - d) None of the above
4. What action does the Orbit Tool perform?
 - a) Move your view around the design at any angle
 - b) Move your view up and down, right and left
 - c) Zoom in and out of the design
 - d) None of the above
5. What action does Pan tool perform?
 - a) Move your view vertically or horizontally
 - b) Move your view up and down, right and left without changing the angle
 - c) Zoom in and out of the design
 - d) None of the above

Answers of Choose the correct answer:-

(1)- b






(2)- b

(3)- a

(4)- b

(5)- a

B. Write down the names of the given tools.

Icon	Name of the Tool
1. 	
2. 	
3. 	
4. 	
5. 	

Answers of Fill in the blanks:-

(1) Line tool (2) Rectangle tool (3) Offset tool (4) Push/pull (5) Move

C. Answer the following questions.

1. What is SketchUp?
2. How is 3D text created in SketchUp? Write down the steps.
3. What is the use of Pan Tool in SketchUp?
4. What is the use of creating components in SketchUp?

C. Answer the following questions:-

1. **Answer:-** **SKETCHUP** is a computer program that lets you create simple as well as complex 3D models of objects and buildings in a fast and easy way.

2. **Answer:-**

Step 1: Select the 3D text option from the Tools menu. The Place 3D text dialog box will appear on the screen.

Step 2: Type the text you wish to enter and select the settings given below, like Font, Align and so on.

Step 3: Click on the Place button to close the dialog box.

3. **Answer:-** This tool is used for moving the camera vertically or horizontally.

4. **Answer:-** The following are the main components present in SketchUp Window.

Menu Bar: This bar consists of commands and settings such as File, Edit, View, Window and so on.

Tool Bar: This bar consists of basic tools required for creating 3D models.

DrawingArea: This is the area where models are created. The 3D space is recognized by the axes.

Dialog Boxes: There are eight dialog boxes in SketchUp such as Components, Materials, Instructor and so on.

Status Bar: There are two important parts of the Status bar. It provides you with the tips in the middle and the Measurement box on the right.

RSMPS,SUPAUL

By: - Brajesh Kumar (TGT Computer)

RSM PUBLIC SCHOOL , SUPAUL